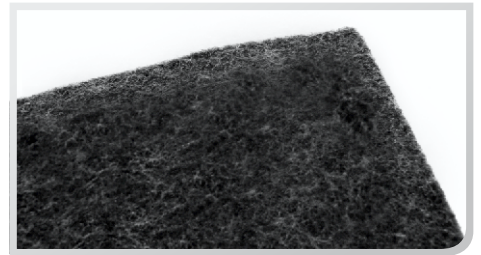


# Geomatex NTI

## Product specifications

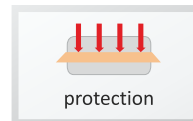
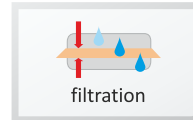
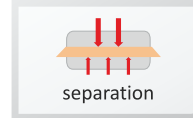


### Product description:

Geomatex NTI is a non-woven geotextile made using modern technology. The main production polymer is 100% polypropylene (PP). It is used to construct retaining structures, linear constructions, waste deposits, drainage systems etc.

- ① combines filtration properties and high water permeability
- ② high resistance to puncture and abrasion
- ③ large choice of thickness of material (weight)
- ④ top level protection at high strain

### Function:



### Certificates:



Geomatex	Weight [g/m <sup>2</sup> ] EN ISO 9864	Tensile Strength		Elongation		Static Puncture (CBR) [kN] EN ISO 12236	Dynamic Perforation (Cone drop test) [mm] EN ISO 13433	Roll			
		longitudinal [kN/m]	transverse [kN/m]	longitudinal [%]	transverse [%]			width [m]	length [m]	area [m <sup>2</sup> ]	weight [kg]
		EN ISO 10319									
NTI BS6	85	6	6	45	50	1,1	37	5	100	500	50,0
NTI BS7	90	7	7	45	50	1,2	35	5	100	500	52,0
NTI BS8	100	8	8	45	50	1,3	34	5	100	500	60,0
NTI BS9	110	9	9	45	50	1,5	30	5	100	500	72,0
NTI BS10	120	10	10	45	50	1,6	28	5	100	500	77,0
NTI BS12	145	12	12	45	50	2,0	24	5	100	500	80,0
NTI BS12W	150	12	12	45	50	2,0	23	5	100	500	82,5
NTI BS13	160	13	13	45	50	2,2	21	5	100	500	95,0
NTI BS15	180	15	15	45	50	2,5	20	5	100	500	98,0
NTI BS16	200	16	16	45	50	2,8	19	5	100	500	107,0
NTI BS18	215	18	18	45	50	3,0	17	5	100	500	125,0
NTI BS20	235	20	20	45	50	3,3	16	5	100	500	124,0
NTI BS20W	250	20	20	50	55	3,6	16	5	100	500	132,0
NTI BS21	260	21	21	50	55	3,8	15	5	100	500	147,0
NTI BS25	300	25	25	50	55	4,3	12	5	100	500	157,0
NTI BS30	350	30	30	50	55	5,0	11	5	100	500	192,0
NTI BS32	400	32	32	50	55	6,0	9	5	100	500	207,0
NTI BS40	500	40	40	50	55	7,0	6	5	100	500	257,0
NTI BS46	600	46	46	50	50	9,0	4	5	50	250	157,0
NTI BS54	700	54	54	50	55	10,0	3	5	50	250	182,0
NTI BS62	800	62	62	50	55	12,0	2	5	50	250	207,0
NTI BS75	1000	75	75	50	55	15,0	1	5	50	250	257,0
NTI BS80	1200	80	100	55	60	18,0	0	5	50	250	307,0

Supplier of product: **GEOMAT s.r.o.**

More information about this product on [www.geomat.eu/en](http://www.geomat.eu/en)



Geomatex	Water permeability normal to the plane	Opening Size	Thickness at 2 kPa
	[l/m <sup>2</sup> /s] EN ISO 11058	[mm] EN ISO 12956	[mm] EN ISO 9863
NTI BS6	115	0,10	–
NTI BS7	110	0,10	0,9
NTI BS8	110	0,10	1,1
NTI BS9	100	0,09	–
NTI BS10	100	0,09	1,3
NTI BS12	100	0,08	1,3
NTI BS12W	90	0,08	–
NTI BS13	80	0,08	–
NTI BS15	70	0,08	–
NTI BS16	70	0,08	1,5
NTI BS18	70	0,08	1,4
NTI BS20	60	0,08	1,7
NTI BS20W	50	0,08	1,7
NTI BS21	50	0,07	–
NTI BS25	45	0,07	2,1
NTI BS30	35	0,07	2,3
NTI BS32	35	0,08	2,7
NTI BS40	30	0,07	3,0
NTI BS46	25	0,07	4,0
NTI BS54	20	0,07	4,5
NTI BS62	20	0,07	5,0
NTI BS75	20	0,07	6,5
NTI BS80	20	0,07	8,0

### Remarks:

Unless indicated otherwise, values are determined according to the applicable European standards and are valid as of the date of this document. Products are subject to continuous development and improvement and these values may change over time.

In case of requirement the delivery of products with different dimensions or other technical data or in the case of interest of technical consultation please contact technical department by e-mail: [tecnica@geomat.eu](mailto:tecnica@geomat.eu).

Supplier of product: **GEOMAT s.r.o.**

More information about this product on [www.geomat.eu/en](http://www.geomat.eu/en)

